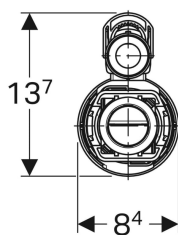
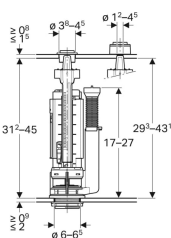


Geberit flush valve type 290, d40, dual flush



Example image



Application purposes

- For ceramic cisterns with drilling \varnothing 40 mm
- For potable water
- For greywater (rainwater) with pH value 6.0–9.5, if a filter system is used

Characteristics

- Dual flush
- Height-adjustable

Scope of delivery

- Fastening material

- Small and large flush volume can be set depending on the amount of water in the cistern
- Overflow pipe height-adjustable
- With lid attachment
- Suitable for basket, for flush valve type 280
- Suitable for basket, for flush valve type 250 (Twico 1)

Technical data

Actuation force | 18 N

Art. no.	Colour / surface
282.303.21.2	bright chrome-plated