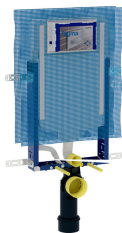
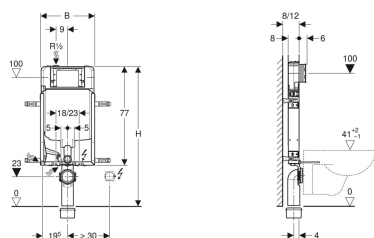


Geberit Kombifix element for wall-hung WC, 109 cm, with Sigma concealed cistern 8 cm



Example image



Application purposes

- For masonry walls
- For installation in part or room-height prewall installations
- For wall-hung WCs with connection dimensions in accordance with EN 33:2011
- For single flush, dual flush or stop-and-go flush

Characteristics

- Range 2016
- Powder-coated installation frame
- Mounting frame with four fastening brackets
- Premounted direct plastering netting
- Fixing bracket coordinated with solid walls with 8 or 12 cm wall thickness
- Fastening for connection bend can be mounted without tools from front

- Concealed cistern with front actuation
- Concealed cistern, fully insulated against condensation
- Immediate post flush possible with factory setting
- Tool-free installation and maintenance work on concealed cistern
- Water supply connection on the top left
- Protection box for service opening can be cut to length, suitable for surface-even actuator plates
- Equipped with conduit pipe for feed pipe for connection of Geberit AquaClean shower toilets
- With fastening option for electrical connection

Technical data

Flow pressure	0.1-10 bar
Flush volume, factory setting	6 and 3 l
Flush volume large, adjustment range	4.5 / 6 / 7.5 l
Flush volume small, adjustment range	3-4 l

Scope of delivery

- Water supply connection Rp 1/2" - R 1/2", compatible with MF, with integrated angle stop valve and hand wheel
- Protection box for service opening
- 4 fixing brackets
- Connection set for WC, ø 90 mm
- Connection bend 90° made of PE-HD, ø 90 mm
- Adapter socket made of PE-HD, ø 90 / 110 mm
- 2 protection plugs
- 2 threaded rods M12
- Fastening material

Art. no.	B	H	T
110.792.00.1	42 cm	109 cm	8 cm

Accessories

- Geberit Kombifix set of leg supports
- Geberit Kombifix set of studs with foot plate



- Actuator plate has to be ordered separately