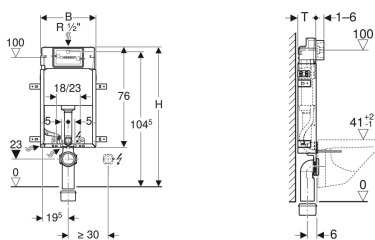


**Geberit KombifixBasic element for wall-hung WC, 108 cm, with Delta concealed cistern 12 cm**



**Application purposes**

- For masonry walls
- For installation in part or room-height prewall installations
- For wall-hung WCs with connection dimensions in accordance with EN 33:2011
- For single flush, dual flush or stop-and-go flush

**Characteristics**

- Zinc-plated installation frame
- Mounting frame with four fastening brackets
- Fastening for connection bend can be mounted without tools from front
- Concealed cistern with front actuation

**Scope of delivery**

- Angle stop valve R 1/2", compatible with MF, with adapter ring
- Protection box for service opening
- 2 distance bolts
- Connection bend 90° made of PE-HD, ø 90 mm
- Adapter socket made of PE-HD, ø 90 / 110 mm

- Concealed cistern, fully insulated against condensation
- Immediate post flush possible with factory setting
- Water supply connection on the rear or top centre
- Connection hose on angle stop valve can be attached without tools
- Equipped with conduit pipe for feed pipe for connection of Geberit AquaClean shower toilets
- With fastening option for electrical connection

**Technical data**

Flush volume, factory setting	6 and 3 l
Flush volume large, adjustment range	4.5 / 6 / 7.5 l
Flush volume small, adjustment range	3-4 l

- Connection set for WC, ø 90 mm
- 2 protection plugs
- 2 threaded rods M12
- Fastening material

Art. no.	B	H	T
110.100.00.1	42 cm	108 cm	12 cm

**Accessories**

- Geberit Kombifix set of leg supports
- Geberit Kombifix set of studs with foot plate



- Actuator plate has to be ordered separately